



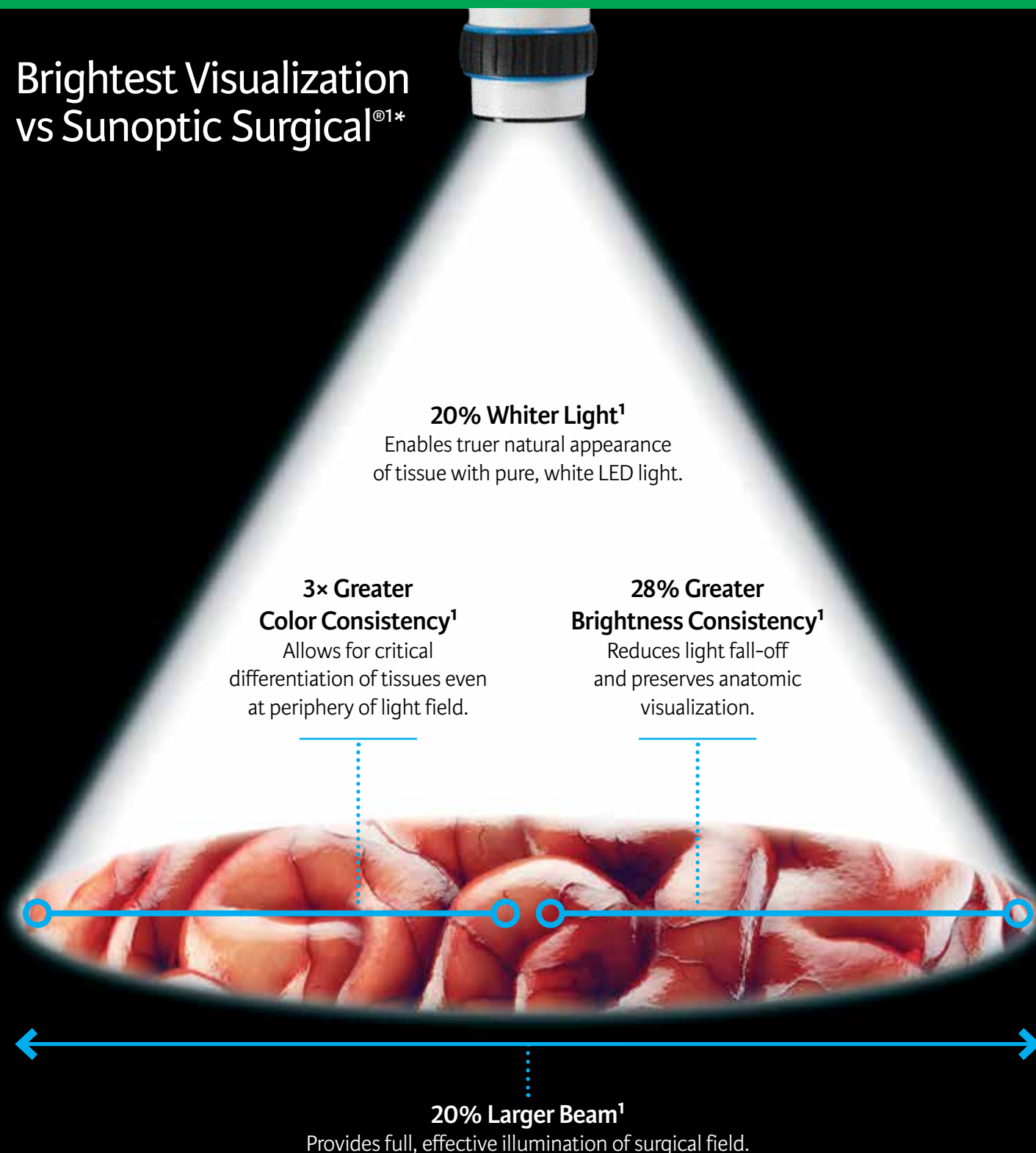
DUO MORE.

MORE Light.
MORE Comfort.

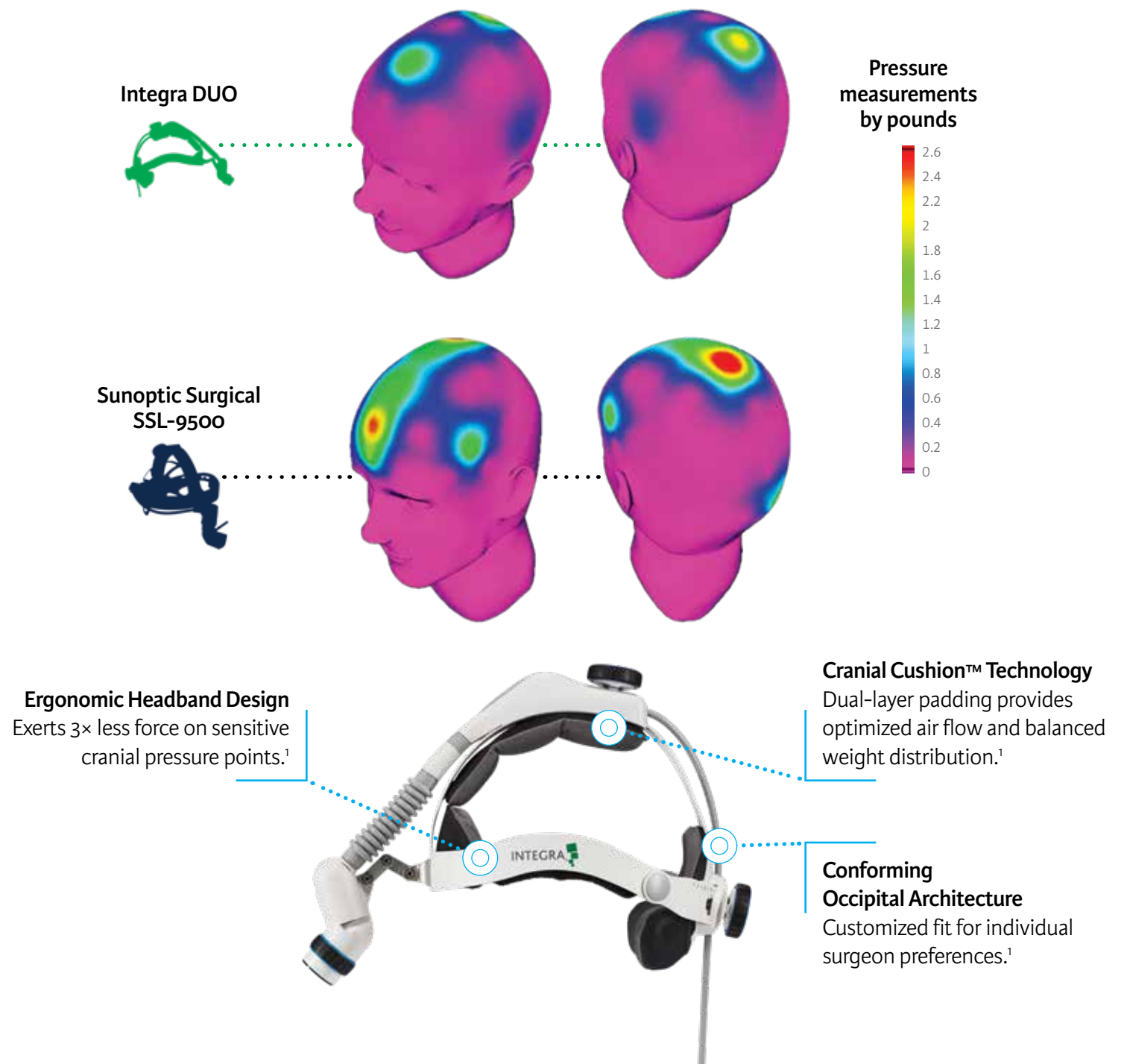
Integra® DUO LED Surgical Headlight,
with the brightest visualization and
superior comfort, lets you focus on
your work—not your gear.

Experience the Integra DUO More Difference.

Brightest Visualization vs Sunoptic Surgical^{®1*}



Superior Comfort vs Sunoptic Surgical^{1*}



LED Headlight System

Limit uncertainty with the freedom of cool, bright light. Integra introduces the superior surgical LED headlight that delivers the cool brightness and color you need with increased freedom and lower cost of ownership.



90500



90500W

Cool, bright LED light

- Homogenous illumination across a broad range of surgical procedures
- Cool LED light eliminates concerns over heat generation
- Vibrant color rendition maximizes visualization of critical anatomy
- 25,000+ hour lamp life limits uncertainty over system brightness and cost of ownership

Greater Freedom

- Light weight 20' power cord increases freedom from clutter of floor stands and fiber optic cables
- Light weight battery power allows untethered movement from side to side of the operating table and from OR to OR

Simple, quiet and comfortable

- Simple 2-point adjustment enables comfortable fit for heads of all sizes
- Unique negative-flow cooling system is whisper-quiet
- Easy to reach 4-position intensity switch is mounted on the headband

MLX 300

We Are Passionate About Putting Surgery in the Best Light

Sunlight is the ideal light for humans to work. It gives you the color distinction you need in surgery. The MLX Xenon light source gives you true white light, not harsh actinic white light with blue shading.

Increased Lamp Warranty - 1000 hours

- True warranty, not pro-rated
- Better cooling leads to longer lamp life

Membrane Touchpad Controls

- Precise light attenuation in 5% increments
- Lamp and System Age meters

New Floorstand

- Dedicated to MLX, part number: 001337
- New large casters - 75 mm vs. 35 mm
- 10° angle for better viewing of LCD display
- Lower center of gravity

Stand-by Switch

- System starts up in Stand-by Mode
- Allows electronic self-check
- Put unit into Stand-by to block light when removing the cable
- Starts up at the same light output setting



MLX Light Source And Accessories

Catalog Number	Description
00MLX	MLX 300W Xenon light source with 20' power cord
00MLXEU	MLX 300W Xenon light source with 6.1m EU power cord
00MLXAU	MLX 300W Xenon light source with 6.1m Australian power cord
00MLXUK	MLX 300W Xenon light source with 6.1m UK power cord
001337	Floorstand for MLX 300W Xenon light source



UltraLite® Pro Headlight

Maximum Comfort

- Occipital Basket
 - Balances and distributes the weight of the headlight and reduces neck strain
- Cranial Support - Stabilizes the headlight
- Adjustable Headband- Provides perfect sizing without temporal compression

Maximum Headlight Performance:

- Superior optics
- Optimized light output
- Enhanced Design
 - New lighter design
 - 3-Point Support System for comfortable stability
 - Extended linkage for better vertical alignment with surgical loupes



Premium Headlight Cable:

- Lightweight and flexible 3mm cable
- Bifurcated design allows even weight distribution and balance
- Translucent outer sheath provides visualization of fiber integrity
- Lifetime Warranty Against Browning

UltraLite Pro Headlight System

Catalog Number	Description
AX2100BIF	UltraLite Pro headlight with 9ft (275cm) premium bifurcated cable, headlight module and gown clips
001370LX	UltraLite Pro replacement headband
001380LX	Headlight module, black
001388LX9	UltraLite Pro premium bifurcated headlight cable, 9ft (275cm)
001388LX11	UltraLite Pro premium bifurcated headlight cable, 11ft (335cm)
001387LX	UltraLite Pro headlight replacement pad kit